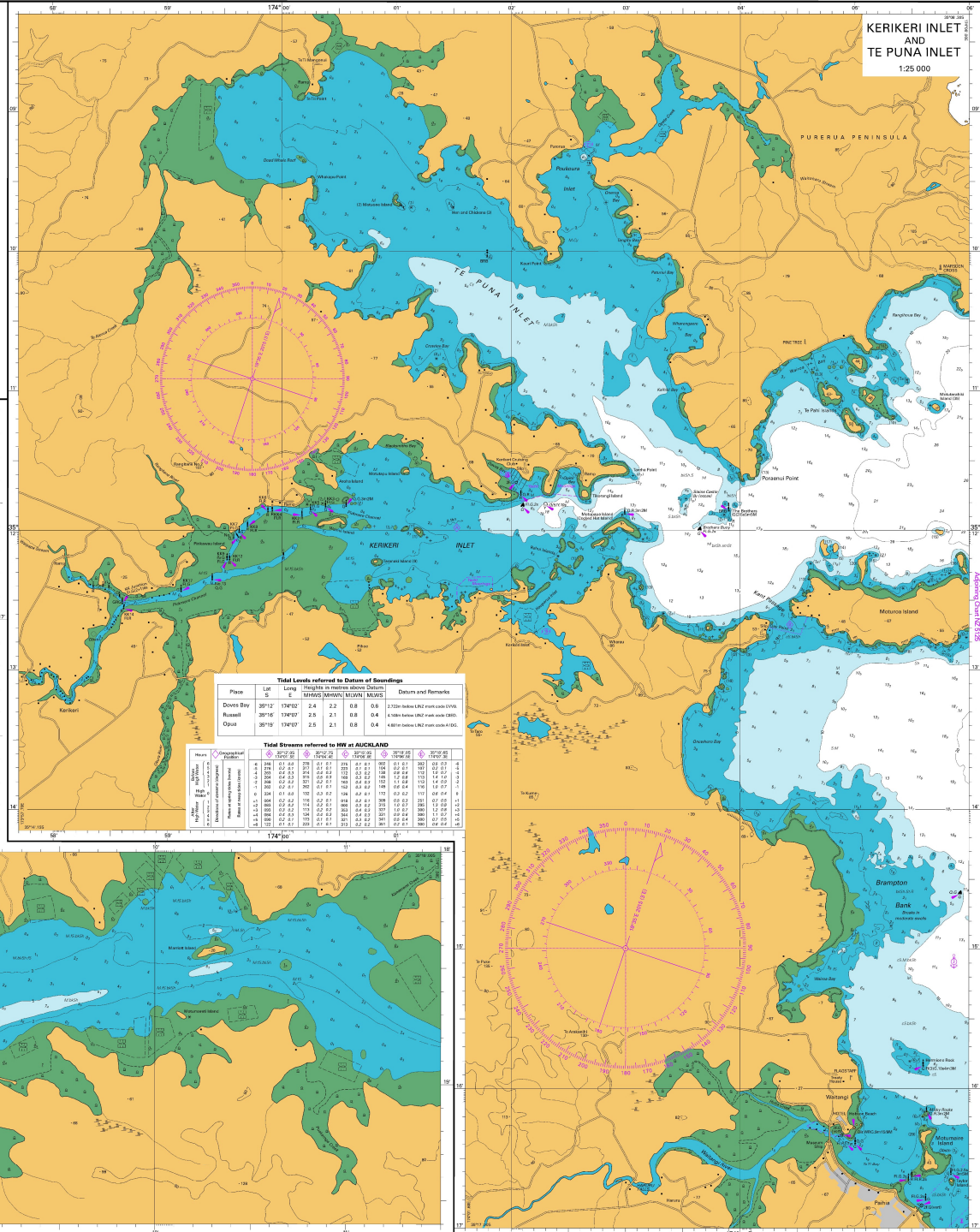


Land Information New Zealand
 NORTH ISLAND - EAST COAST
PLANS IN THE BAY OF ISLANDS
 DEPTHS IN METRES

Depths in metres under thirty-one in metres and decimetres reduced to Chart Datum which is approximately Lowest Astronomical Tide.
Heights in metres. Underlined figures are drying heights above Chart Datum; all other heights are above Mean High Water Springs.
Navigation Marks IALA Maritime Buoyage System, Region A, Red to Port.
Projection Transverse Mercator.
Positions are on World Geodetic System 1984 (WGS84).
Source: For information on the quality of the hydrography see the Source Data Diagram. Topography derived mainly from Land Information New Zealand data.
NOTES:
 Patterns shown in this chart are for information only and do not constitute a guarantee of accuracy. The user is responsible for their own safety and should verify the accuracy of any information used for navigation purposes to other charts not in force at the time of use.
 These charts are not to be used as a substitute for a compass and other navigational instruments.
 Marine Data provided in this chart is not intended for use in navigation and is not to be used as a substitute for a compass and other navigational instruments.



Tidal Levels referred to Datum of Soundings

Place	LMT	S	E	MHW		MLWN		MWS		Datum and Formulas	
				m	dms	m	dms	m	dms	Formula	Formula
Doved Bay	39°12'	174°07'	2.4	2.2	0.8	0.8	0.4	0.4	2.2704 below LMS mean code 1000		
Russell	39°16'	174°07'	2.5	2.1	0.8	0.8	0.4	0.4	4.1485 below LMS mean code 1000		
Opua	39°19'	174°07'	2.5	2.1	0.8	0.8	0.4	0.4	4.1485 below LMS mean code 1000		

Tidal Streams referred to HW at AUCKLAND

Place	LMT	S	E	MHW		MLWN		MWS	
				m	dms	m	dms	m	dms
Doved Bay	39°12'	174°07'	2.4	2.2	0.8	0.8	0.4	0.4	
Russell	39°16'	174°07'	2.5	2.1	0.8	0.8	0.4	0.4	
Opua	39°19'	174°07'	2.5	2.1	0.8	0.8	0.4	0.4	